

Messaging Client



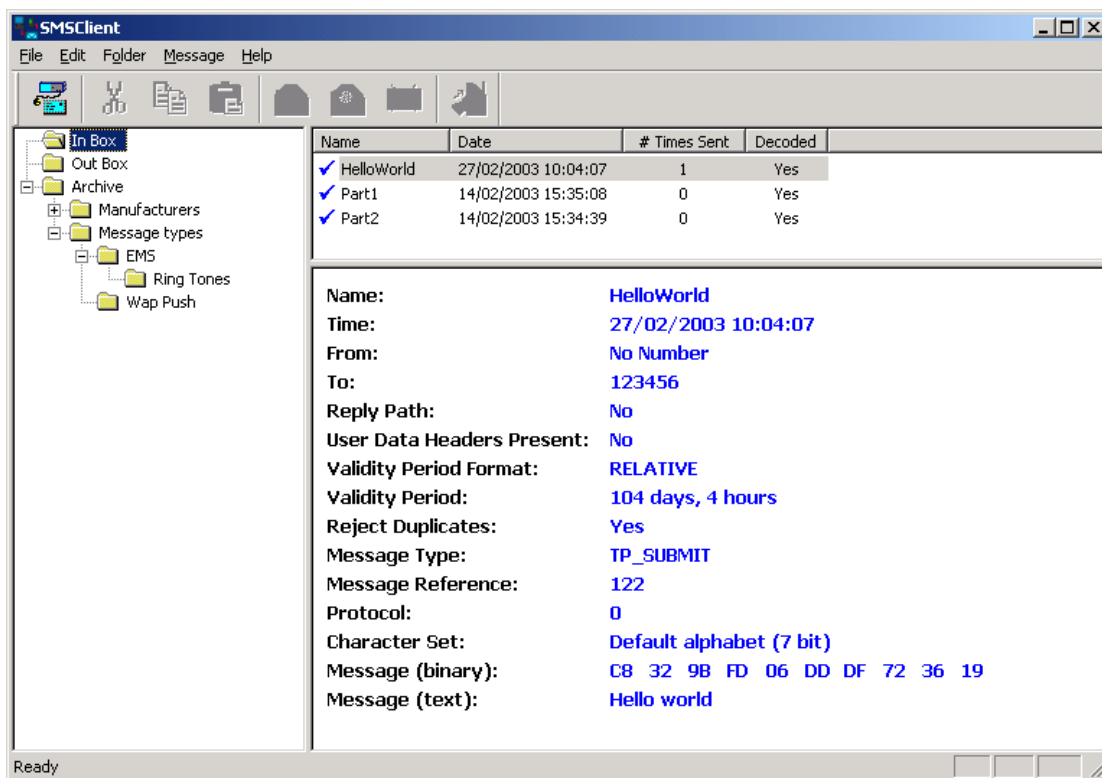
SMS and EMS testing with a familiar user interface

Having problems generating and keeping track of the multitude of messages to verify a Phone's interoperability? Need an Editor to encode/decode SMS messages?

The GSM Short Message Service has found applications in transferring much more than simple text messages. Examples include Picture Messaging, Ring-tones, Calendar Events and Business Cards as well as its use for WAP and MMS notifications.

The Messaging Client overcomes many of the problems in managing a test suite of messages and provides a user-friendly interface for sending and receiving messages from the Mobile Phone. Using either the **Rohde & Schwarz CRTx02, CRTU-G or CMU200-DATS** it allows messages to be sent and received with the confidence that the intervening networks do not affect the content.

Using a user interface very similar to a simple email client, messages may be sent, received and archived in a logical fashion. Messages from Mobile Phones can be re-sent to other Mobile Phones with or without editing them first. In addition, new messages can be created from scratch using the powerful editing capabilities that support both textual and binary content.

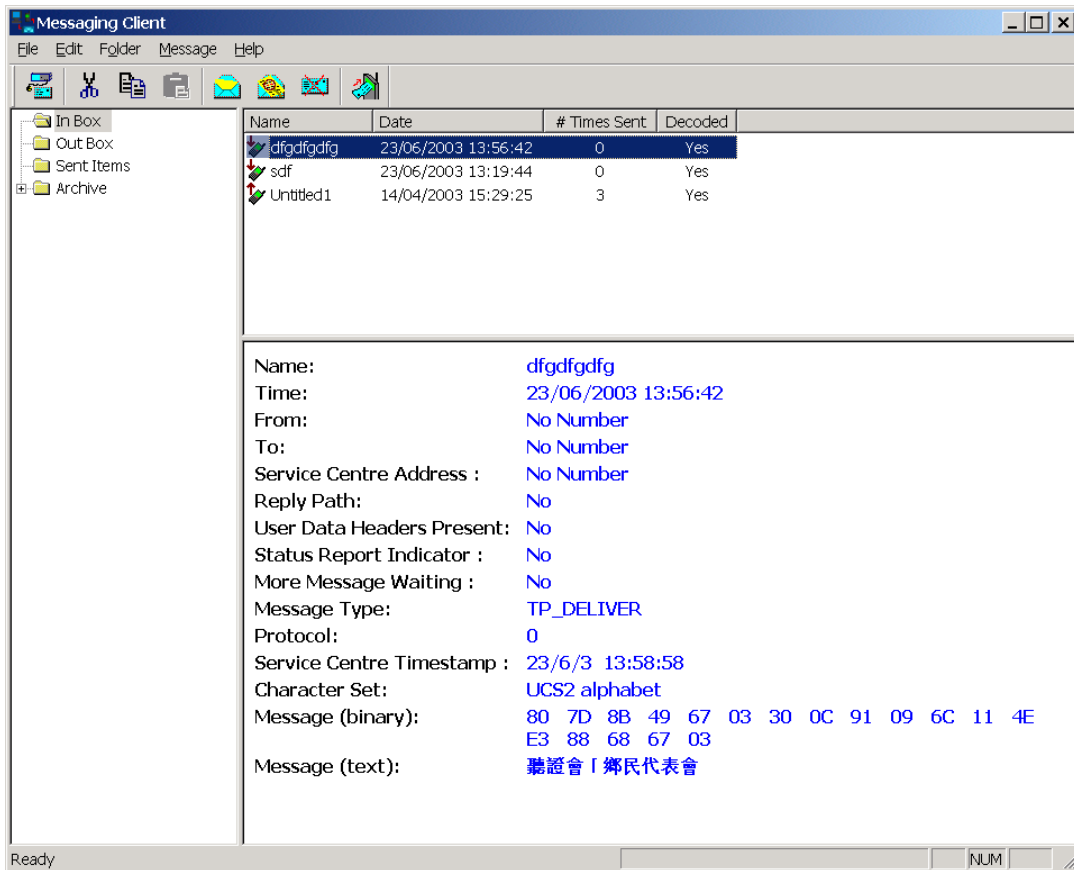


Features

- o Allows portfolio of messages to be built and archived for interoperability testing.
- o Requires no GSM expertise (although GSM experts can use the binary editing modes).
- o Simple user interface.
- o Automatic handling of multi-part messages
- o Powerful decoding and editing capabilities with support for other languages.
- o Can be used with the R&S Data Application Test Suite for CRTU-G as GSM network simulation or an optional Messaging Client Signalling Unit or with CMU200-DATS.
- o Import/Export feature message bytes



Language Translations



Messaging Client showing support for other languages